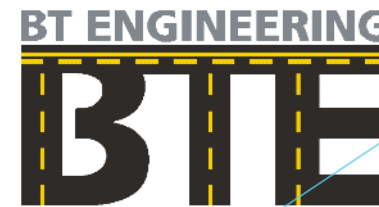


County Road 22 Reconstruction from I.C. Roy Drive to West Belle River Road

Public Consultation Centre

June 18, 2024



Welcome!

County of Essex

Reconstruction of County Road 22

I.C. Roy Drive to West Belle River Road

Welcome to the Public Consultation Centre (PCC) for County Road 22 Reconstruction from I.C. Roy Drive to West Belle River Road. Should you have any questions regarding the study, please contact the County or Consultant Project Managers listed below. The PCC exhibits will also be available on the County's website at: <https://www.countyofessex.ca/en/resident-services/county-road-22-corridor-study.aspx>. Following the PCC, there will be a 14-day period to send in your comments. Please provide your comments by **July 2, 2024**.

Steve Taylor, P.Eng.
Consultant Project Manager
BT Engineering Inc.
509 Talbot Street
London, Ontario N6A 2S5
Phone: (519) 672-2222
Email: stevenj.taylor@bteng.ca

Daniel Baggio P. Eng.
Project Manager
County of Essex
360 Fairview Avenue. W, Suite 315
Essex, Ontario N8M 1Y6
Phone: (519) 776-6441 ext. 1507
Email: dbaggio@countyofessex.ca

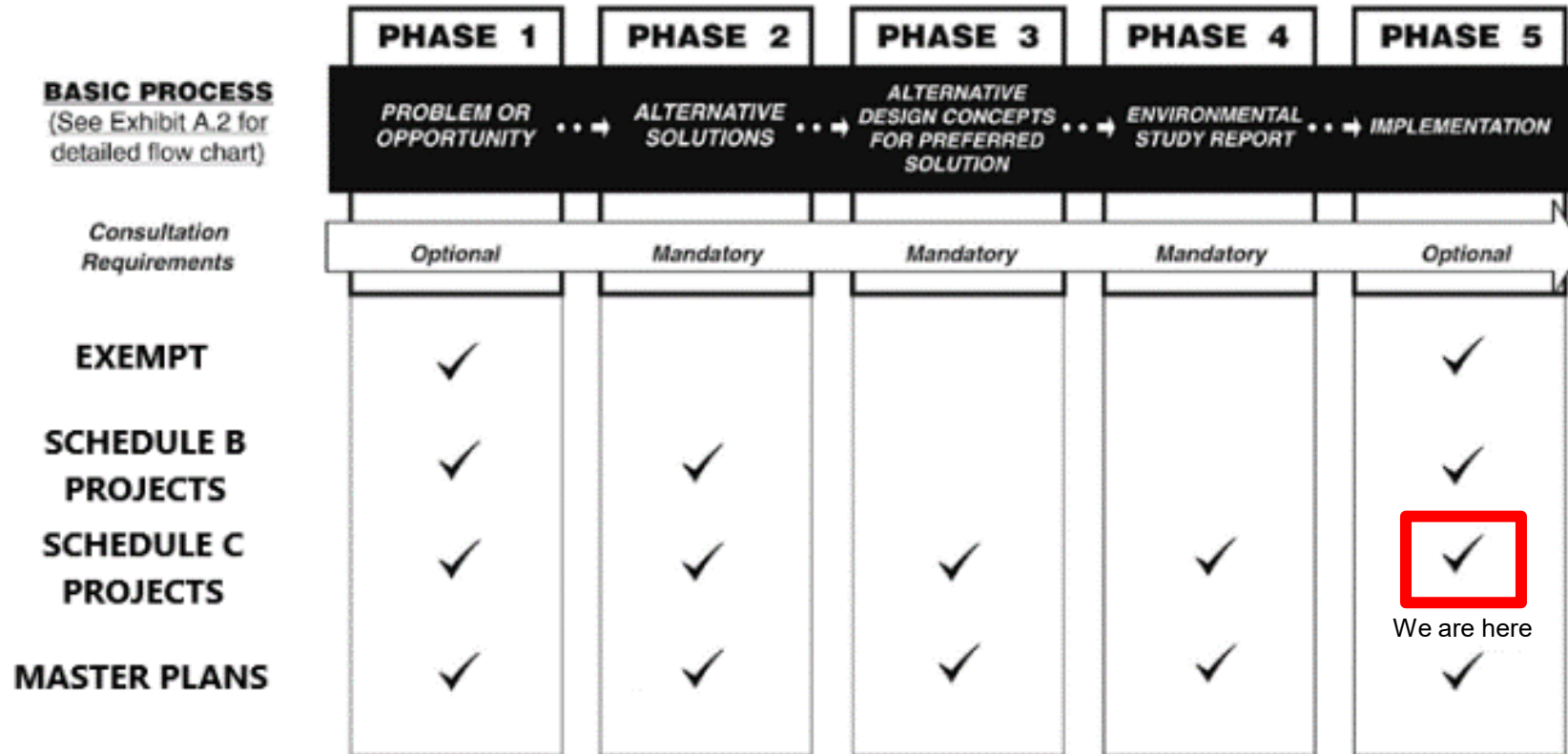
Krystal Kalbol, P.Eng.
Corporate Leader - Operations
Municipality of Lakeshore
419 Notre Dame Street
Belle River, Ontario N0R 1A0
Phone: (519) 728-1975 ext. 655
Email: kkalbol@lakeshore.ca



Project History

- ▶ A 2006 Environmental Assessment (EA) was completed for County Road 22 from Manning Road (CR 19) to West Belle River Road. Roadway safety and capacity concerns were identified which included this project section of County Road 22 from I.C. Roy Drive to West Belle River Road.
- ▶ In 2012, the Municipality of Lakeshore completed a Corridor Transportation Strategy that identified the roadway vision as an “Urban Avenue”.
- ▶ The County of Essex subsequently completed a Corridor Alternatives and Strategies Study in 2022.
- ▶ The Corridor Alternatives and Strategies Study identified that in addition to the EA recommendations for the roadway, the design alternative would include a multi-use path on the south side, a sidewalk on the north side and separated cycle tracks to support active transportation within the corridor.
- ▶ Based on the previous studies the project has EA clearance and can proceed to construction.

Municipal Class Environmental Assessment



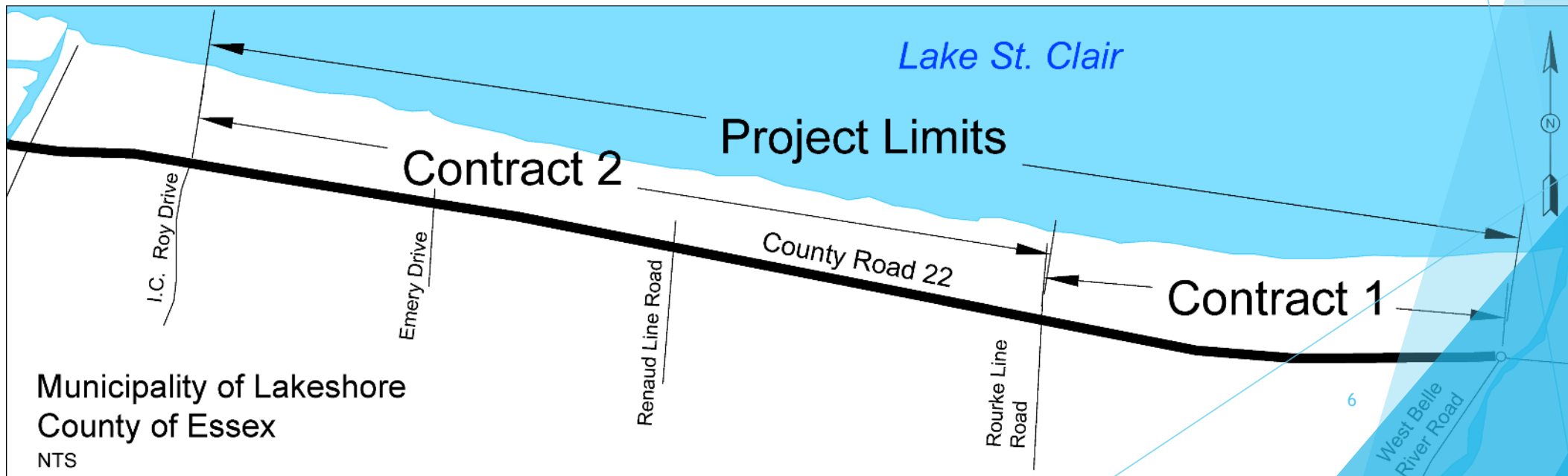
- ▶ This Public Consultation Centre is a component of the public consultation program.
- ▶ Technical investigations will continue to refine the proposed detail design for staged implementation.

Purpose

- ▶ To finalize the detailed design for the recommended improvements on County Road 22 from I.C. Roy Drive to West Belle River Road. This is a Schedule “C” project under the Municipal Class Environmental Assessment (EA).
- ▶ Proceed to construction of County Road 22 from I.C. Roy Drive to West Belle River Road.
- ▶ The project will include provision of active transportation improvements, consolidation of accesses along the arterial road corridor, new municipal services, illumination, traffic signals and improved pavement performance.

Project

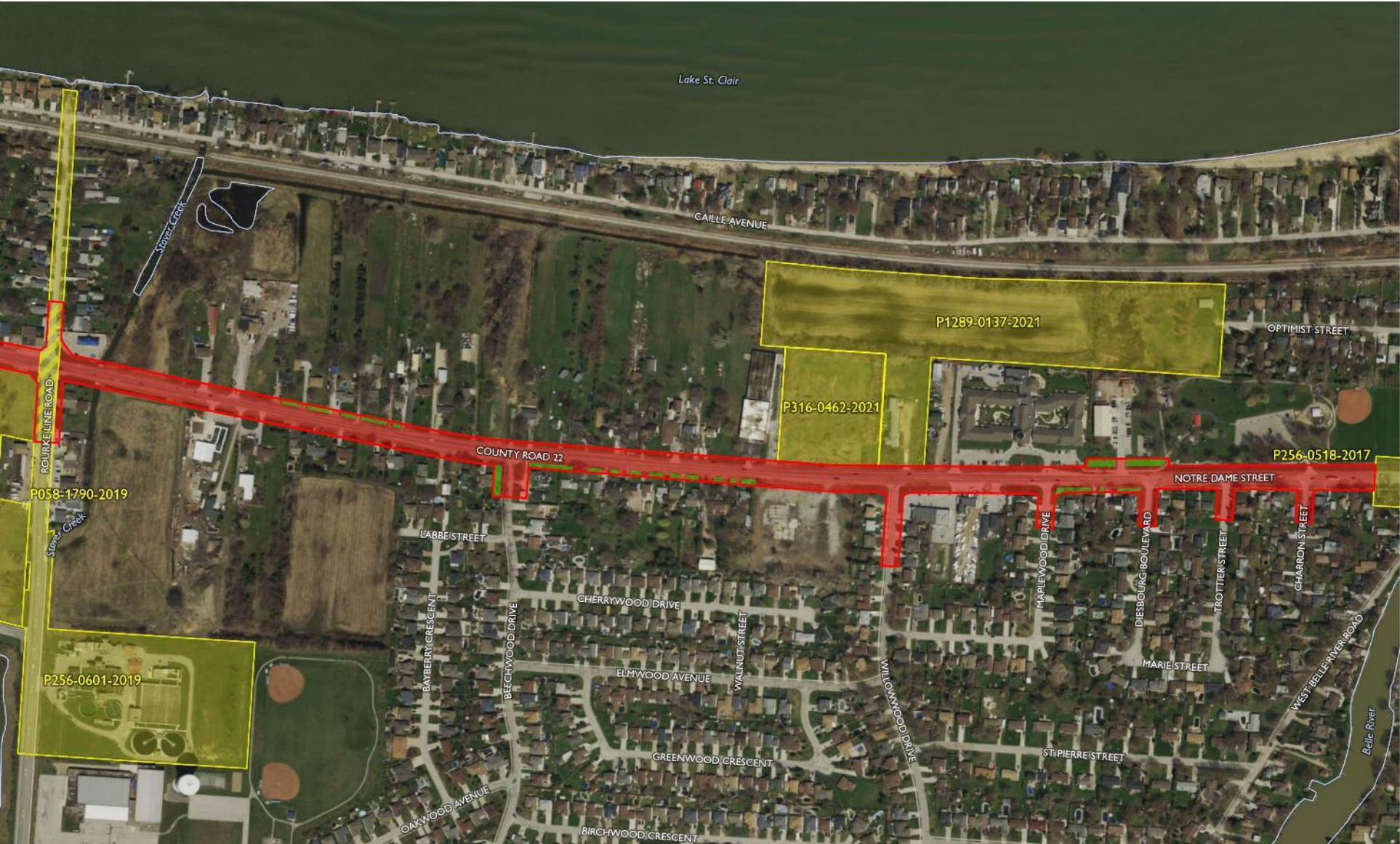
- ▶ The County of Essex is responsible for the road corridor and the Municipality of Lakeshore is responsible for the active transportation component and collector and local side streets.
- ▶ The project includes the closure of several Lakeshore side streets to improve traffic operations on County Road 22 and to better accommodate pedestrians and cyclists.
- ▶ The project will be staged in two contracts, as shown below.



Stage 1 Archaeological Assessment (AA)

- ▶ Based on the Stage 1 background research and property inspection completed in August 2023, the following recommendations apply:
 - ▶ Portions of the project which have been previously subject to an archaeological assessment do not require further assessment.
 - ▶ The Stage 1 Archaeological Assessment for both Contract 1 and 2 is on the Resource Table.
 - ▶ Properties that retain archaeological potential will have a Stage 2 Archaeological Assessment prior to construction.
 - ▶ The Stage 2 assessment will consist of a test pit survey at 5 m intervals.
 - ▶ Properties requiring a Stage 2 Archaeological Assessment in Contract 1 are shown on the next exhibits.

Stage 2 AA



STAGE 1 RESULTS

- Study Area
 - Report Photo
 - Previous Assessment
- STAGE 1 ARCHAEOLOGICAL ASSESSMENT RESULTS**
- Areas of Archaeological Potential
- Manicured Lawn (Test Pit Survey Required)
- Areas of Low Archaeological Potential
- Disturbed Road Right-of-Way, Sidewalk, Driveway and Building Footprint
 - Previously Assessed



Prepared by JFM 2024 05-15
Contains information licensed under the Open Government Licence - Canada and the Open Government Licence - Ontario



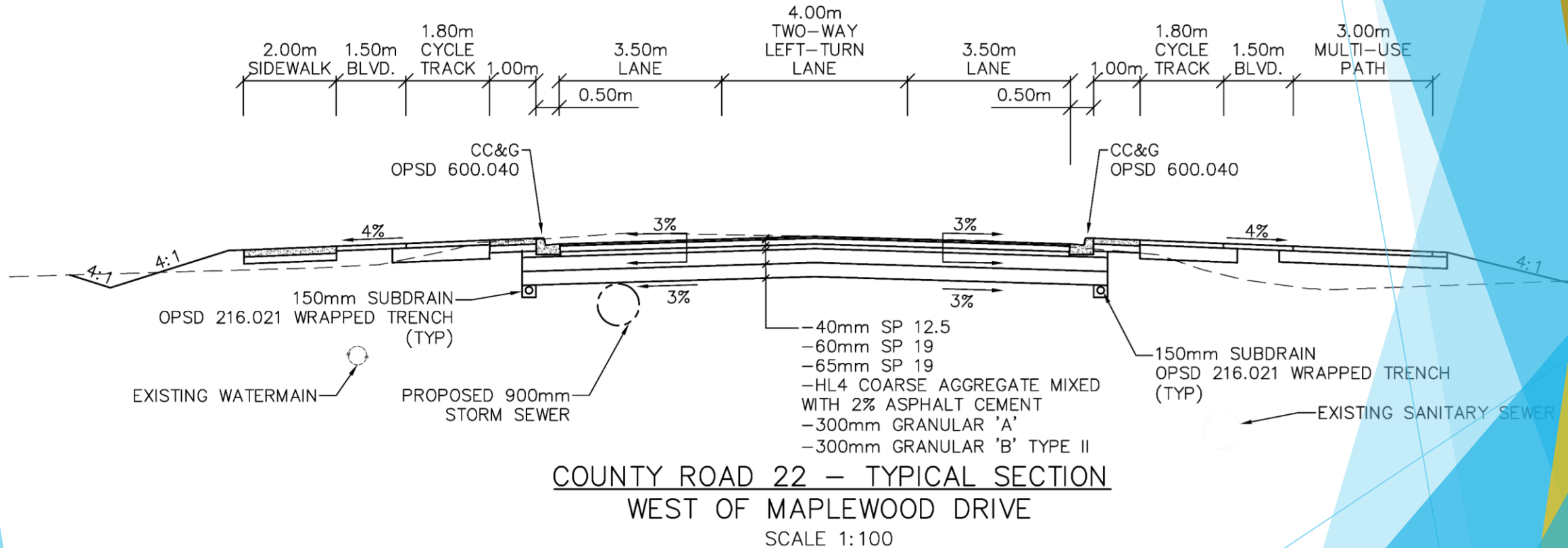
Property

- ▶ Property acquisition of some properties will be required to construct the cul-de-sacs on side streets on the south side of County Road 22.
- ▶ Minor property acquisition is required on both sides of County Road 22 to accommodate drainage.
- ▶ Property negotiations will be completed in 2024/2025.
- ▶ Landowners that currently have subdrains to existing ditches will be directed to the storm sewer locations (any known locations please identify on a comment sheet).
- ▶ Driveways will be modified to the County standard where necessary.
- ▶ Existing parking may be impacted in several locations.

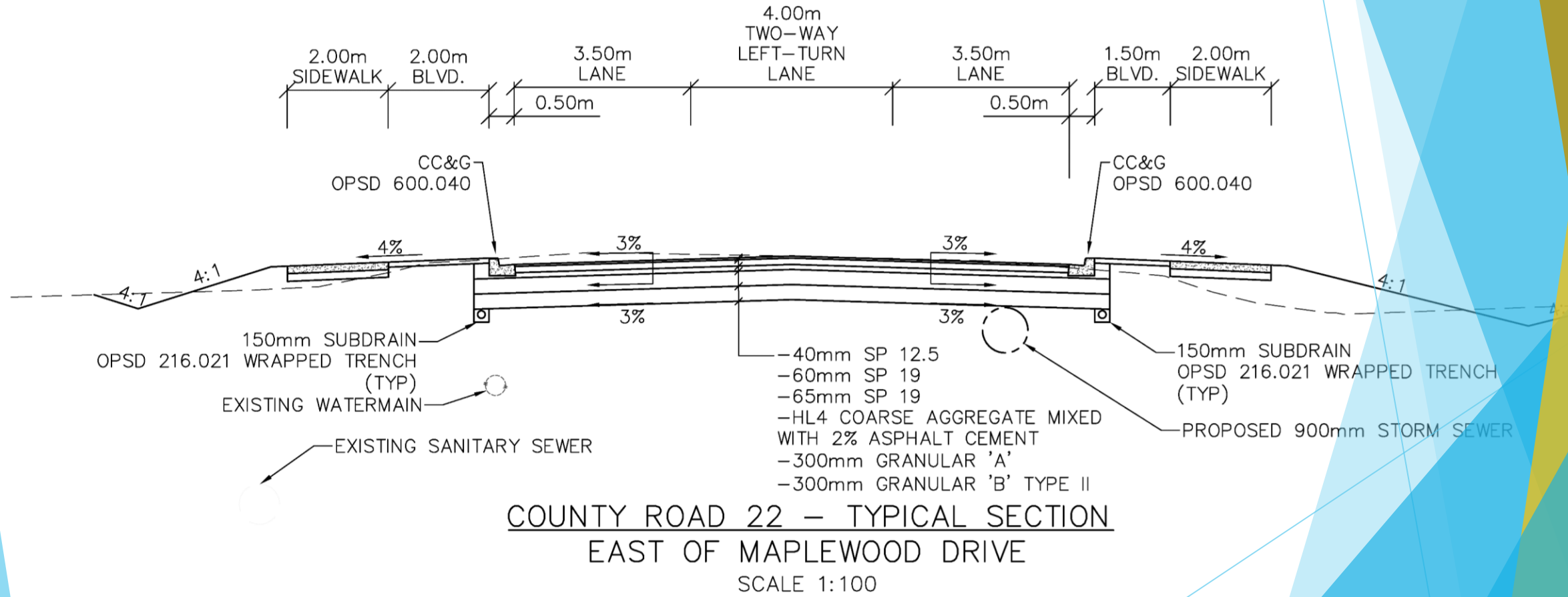
Design Features

- ▶ Continuous two-way left turn lane will be provided along the corridor.
- ▶ Provisions for pedestrians and cyclists include:
 - ▶ Sidewalks.
 - ▶ A Multi Use Path.
 - ▶ Raised cycle tracks.
- ▶ Illumination.
- ▶ New traffic signals at the intersections with Emery Drive and Rourke Line Road.
- ▶ New pedestrian crossover will be installed at Maplewood Drive.
- ▶ Storm sewers and associated drainage works.
- ▶ Municipality of Lakeshore, Water and Wastewater Master Plan Update is reviewing the need for a new sanitary sewer along this portion of County Road 22 (ongoing).
- ▶ Landscaping.

Typical Cross Section



Typical Cross Section



Detail Design Roadway Drawings

- ▶ The proposed improvements for Contracts 1 and 2 are shown on the following drawings.

Detail Design Plan and Profile Roadway Drawings

- ▶ The proposed improvements for Contracts 1 are shown on the following drawings.

Schedule

- ▶ Completion of Stage 2 Archaeological Assessment in 2024.
- ▶ Property Acquisition to commence in 2024 (proposed completion in 2025).
- ▶ Reconstruction from Rourke Line Road to West Belle River Road (2025).
- ▶ Construction from I.C. Roy Drive to Rourke Line Road (2026).

We want to hear from you!

Please provide comments by contacting the County or Municipality or Consultant Project Manager below:

Steve Taylor, P.Eng.
Consultant Project Manager
BT Engineering Inc.
509 Talbot Street
London, Ontario N6A 2S5
Phone: (519) 672-2222
Email: stevenj.taylor@bteng.ca



Daniel Baggio P. Eng.
Project Manager
County of Essex
360 Fairview Avenue. W, Suite 315
Essex, Ontario N8M 1Y6
Phone: (519) 776-6441 ext. 1507
Email: dbaggio@countyofessex.ca



Krystal Kalbol, P.Eng.
Corporate Leader - Operations
Municipality of Lakeshore
419 Notre Dame Street
Belle River, Ontario N0R 1A0
Phone: (519) 728-1975 ext. 655
Email: kkalbol@lakeshore.ca



Please provide your comments on or before **July 2, 2024.**

Thank you for your participation in the Project.

- ▶ To receive updates on the project, request that your name/e-mail be added to the contact list.
- ▶ Your input into this project is valuable and appreciated.

All information is being collected in accordance with the *Municipal Freedom of Information and Privacy Act*.